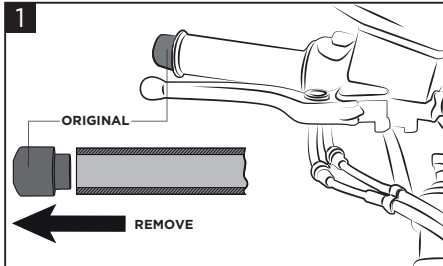
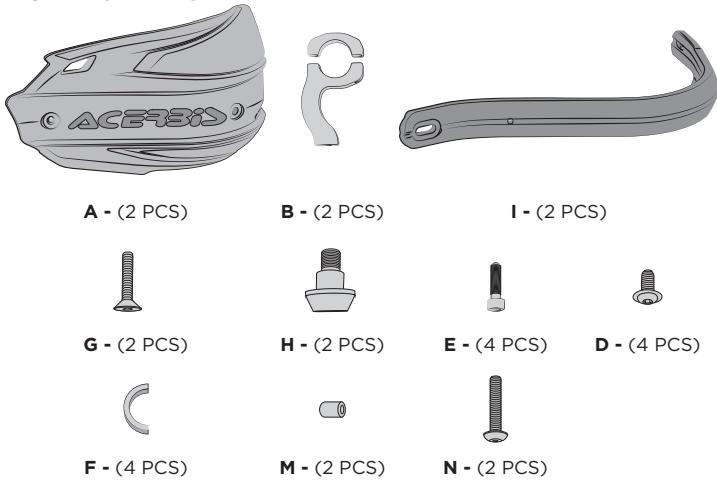


ACERBIS

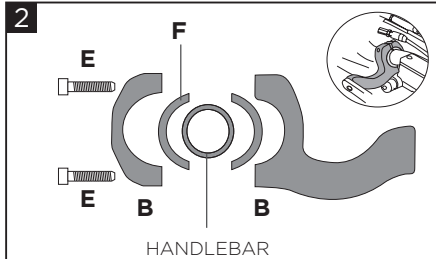
ENDURANCE-X HANDGUARD YAMAHA TÈNÉRÉ 700 '19 PARAMANO ENDURANCE-X YAMAHA TÈNÉRÉ 700' 19

COD. 500009176

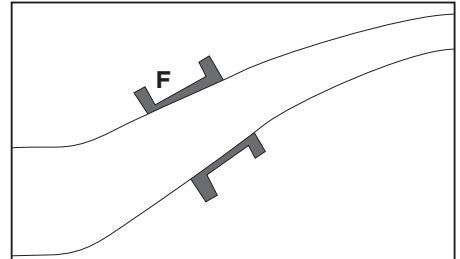
ACERBIS PARTS



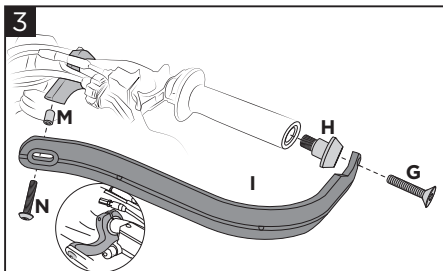
1
Untighten the original screw and remove the counterweight.
Svitare la vite originale e rimuovere il contrappeso.



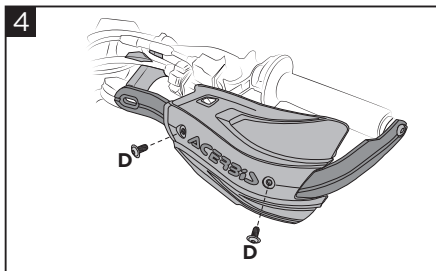
2
Mount the bracket (B) on the handlebar using screws (E) and use the spacers (F).
Montare il bracciale (B) sul manubrio tramite viti (E) e utilizzare i distanziali (F).



Correct position of spacer (F).
Posizione corretta del distanziale (F).



3
Fix the bar (I) to the handlebar using the spacer (H) and the screw (G) as shown in the figure. Fix the bar to the bracket using the bushing (M) and the screw (N).
Fissare la barra (I) al manubrio tramite il distanziale (H) e la vite (G) come mostrato in figura. Fissare la barra al bracciale tramite la boccia (M) e la vite (N).



4
Assemble the cover to the bar using the screws (D).
Assemblare la cover alla barra utilizzando le viti (D).

WARNING!

Follow mounting instruction exactly. Ensure that the mounting is secure before riding. These handguards will not prevent injury in the event of a crash. They are designed to protect the hands from cold weather. Be sure that you follow the instruction for installing the handguards. Do not ride with a broken tie wrap. Check to be sure the throttle and other controls are free every time you ride. Failure to heed instruction and this warning could lead to interference with the controls, loss of control of the motorcycle, and an accident.

EUROPE

ACERBIS ITALIA S.P.A.
VIA SERIO, 37
24021 ALBINO (BG)
ITALY

U.S.A.

ACERBIS U.S.A. INC.
MAIL P.O. BOX 2030
SUN VALLEY, ID 83353
SHIP 110 LINDAY CIRCLE
KETCHUM, ID 83340
U.S.A.

UNITED KINGDOM

ACERBIS U.K LTD
UNIT 2 LUTON ENTERPRISE PARK
SUNDON PARK ROAD
LUTON, BEDFORDSHIRE LU3 3GU
GREAT BRITAIN