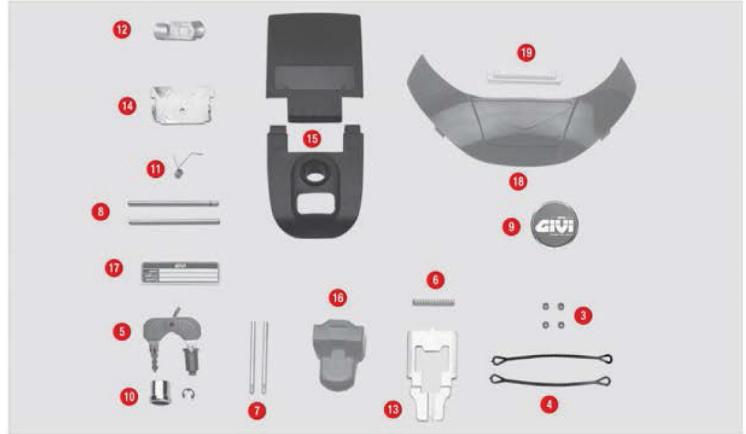


## E30 TOUR



1	Z30CNM	E30 top-shell black
2	Z29FNM	E30 bottom-shell black
3	Z112R	Red pulley, 4 pcs.
4	Z115R	Stop bag opening yarn, 2 pcs.
5	Z140R	Key locks with corresponding bush with red handle
6	Z191R	Push button spring, 1 pcs.
7	Z193	Hinge pin 62 mm
8	Z195	Pin D. 04x80 mm
10	Z210	Chrome bushing for lock set

11	Z236	Hinge spring
12	Z243	Key lock plate
13	Z310	Bolt
14	Z312	Hinge plate
15	Z314NM	Hinge black climbed on
16	Z315	Push button
17	Z405 ▲	Name holder
19	Z846R	Circuit covering cap, 1 pcs.
	Z639N	Top-case reflector

## E33 POINT

	Z33CNM	E33 top-shell black
	Z159R	Bag lock lining, 1 pcs.
	Z191R	Push button spring, 1 pcs.
	Z193	Hinge pin 62 mm
	Z195	Pin D. 04x80 mm
	Z210	Chrome bushing for lock set
	Z236	Hinge spring
	Z243	Key lock plate
	Z310	Bolt

	Z312	Hinge plate
	Z314N	Hinge black
	Z315	Push button
	Z405 ▲	Name holder
	Z845	Top-case reflector
	Z850	Sticker set for E33 Point DX/SX
	Z156	Key for case lock
	Z112R	Red pulley, 4 pcs.
	Z115R	Stop bag opening yarn, 2 pcs.

## E280 BOXY



4	Z191R	Push button spring, 1 pcs.
5	Z193	Hinge pin 62 mm
6	Z195	Pin D. 04x80 mm
7	Z210	Chrome bushing for lock set
8	Z236	Hinge spring
10	Z243	Key lock plate

12	Z310	Bolt
13	Z312	Hinge plate
14	Z314N	Hinge black
15	Z315	Push button
16	Z405 ▲	Name holder
17	Z140R	Key locks with corresponding bush with red handle