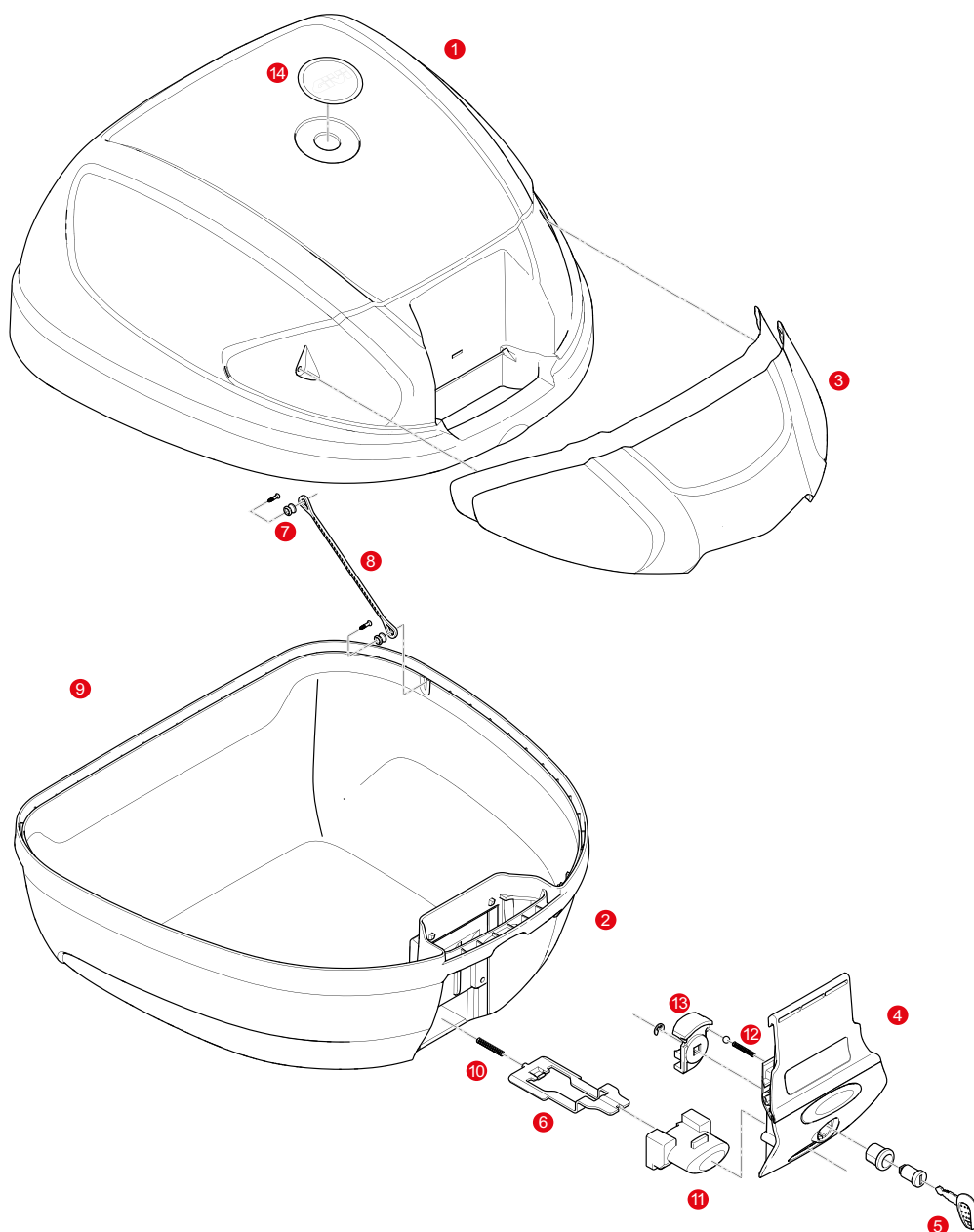


## E300N2 / E300NT2



1	<b>Z32CNM</b>	E300N assembled top-shell black
	<b>Z32CBM</b>	E300B assembled top-shell white
2	<b>Z29FNM</b>	E280 - E300N - E300B bottom-shell black
3	<b>Z1732SR</b>	Central reflector for E300N
	<b>Z1732FSR</b>	Central reflector for E300B
4	<b>Z314NM</b>	Black hinge climbed on
	<b>Z641NM</b>	Lock set
5	<b>Z140R</b>	Key locks with corresponding bush with red handle
6	<b>Z310</b>	Bolt
7	<b>Z112R</b>	Red pulley, 4 pcs.

8	<b>Z115R</b>	Stop bag opening yarn, 2 pcs
9	<b>Z195</b>	Pin D. 04x80 mm
10	<b>Z191R</b>	Push button spring, 1 pcs
11	<b>Z315</b>	Push button
	<b>Z193</b>	Hinge pin 62 mm
12	<b>Z236</b>	Hinge spring
13	<b>Z243</b>	Key lock plate
	<b>Z4513R</b>	Plate below lock for Security Lock key
14	<b>Z2000R</b>	Chromed GIVI logo