



YOSHIMURA

RESEARCH&DEVELOPMENT OF AMERICA, INC.

5420 DANIELS STREET STE A, CHINO CA 91710 · (800)634-9166 · (909)628-4722 · FACSIMILE (909)591-2198

WWW.YOSHIMURA-RD.COM

Signature Series

Qualified Manufacturer Declared "Replacement Part"

**2016
KTM
450 SX-F**

**2016
Husqvarna
FC 450**

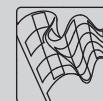
**264610D320 (SS/AL)
264611D720 (Ti/Ti)**

RS-4 Full-System Exhaust



Signature Series systems are:

- CARB/EPA tail-pipe emissions compliant.
- Marked with appropriate EPA noise labels.
- Independent laboratory tested for EPA new vehicle noise compliance.

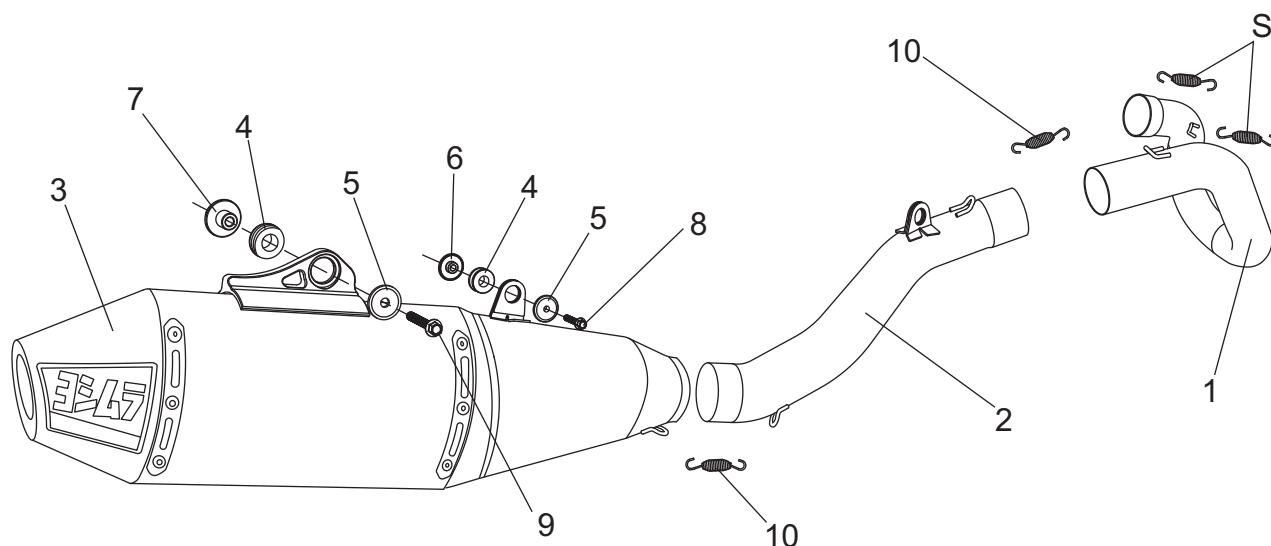


CAUTION: The muffler packing on this system **MUST** be replaced every 6-8 hours of use, or after each moto. Failure to follow recommended muffler re-packing interval can cause muffler damage and may void the warranty.



NOTE: IN THE STATE OF CALIFORNIA, IT IS ILLEGAL TO MODIFY THE EMISSION CONTROL SYSTEM, WHICH INCLUDES THE CARBURETORS OF ANY VEHICLE.

Assembly Diagram



S = Stock

No.	Item	Description	Qty.
1	26461-104 26461-704	Yoshimura SS Header Yoshimura Ti Header	1
2	26461-144 26461-744	Yoshimura SS Tailpipe Yoshimura Ti Tailpipe	1
3	264612D320-RMA 264611D720-RMA	SS/AL Muffler Assembly Ti/Ti Muffler Assembly	1
4	Z1023	Rubber Grommet	2
5	ALS-046	Aluminum Spacer	2
6	ALS-054	Aluminum Spacer	1
7	ALS-047	Aluminum Spacer	1
8	M6X35H	6mm x 35mm Flanged Hex Head Bolt	1
9	M6X45H ¹ M6X50H ²	6mm x 45mm Flanged Hex Head Bolt 6mm x 50mm Flanged Hex Head Bolt	1
10	RACE-SPS-1	Medium Exhaust Spring	2
**	INS-U-3	Low Volume Sound Insert (Installed)	1
**	ST-200	Spring Puller Tool	1
**	347PLUG	Wash Plug	1
**	17029	Sticker Sheet	1
OPTIONAL REPLACEMENT PARTS			
	INS-23-K	Low Volume Sound Insert Kit	
	REPACK-RS4-PK12	Re-pack Kit	

** Not shown on diagram.

1 M6X45H used on KTM 450SX-F.

2 M6X50H used on Husqvarna FC 450.

CAUTION: Exhaust system can be extremely hot. Let motorcycle cool down before beginning installation. Always wear hand and eye protection and take precautionary measures to avoid injury.

WARNING: Always properly support vehicle with a stand and/or lift when servicing or performing any work. Unstable vehicles may present dangerous conditions and may cause property damage and/or personal injury.

NOTE: Read through all instructions before beginning installation.

Removal

1. Remove the stock exhaust spring between the muffler and header.
2. While securely supporting the stock muffler, remove the two muffler mount bolts and carefully remove the stock muffler by sliding toward the rear.
3. Remove the rear shock as per Factory Service/Owners Manual.

Note: Removal of the rear shock is required to remove the stock header.

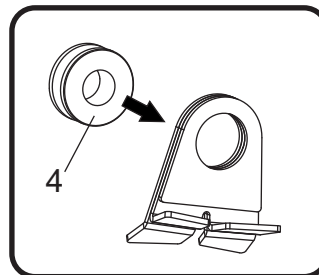
4. Remove the two header exhaust springs.
5. While securely supporting the stock header, remove the header chassis mount bolt and carefully remove the stock header.
6. Re-install the rear shock following the reverse steps of removal. Torque rear shock bolts to factory specification.
7. Remove the stock rubber grommet and two aluminum spacers from the stock header chassis mount bracket.

Installation

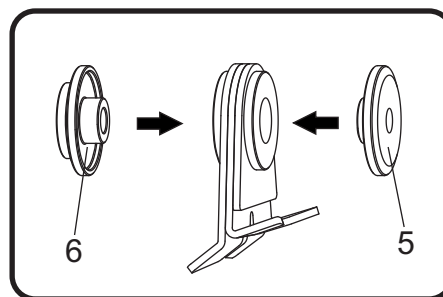
1. Install the stock rubber grommet and two aluminum spacers into (No. 2) 26461-144/744, tailpipe chassis mount bracket.
2. Install (No. 2) 26461-144/744, tailpipe onto (No. 1) 26461-104/704, header outlet.

3. Install Yoshimura header/tailpipe assembly using the stock header springs. Align Yoshimura chassis mount bracket to the stock chassis mount and secure tailpipe to chassis using the stock bolt. Do not torque at this time.

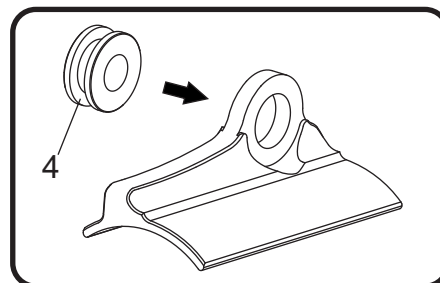
4. Install (No. 4) Z1023, rubber grommet into muffler resonator bracket.



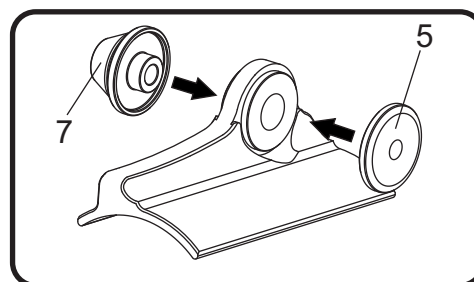
5. Install (No. 5) ALS-046, aluminum spacer in the front side of (No. 4) Z1023, rubber grommet and install (No. 6) ALS-054, aluminum spacer in the back side of (No. 4) Z1023, rubber grommet as shown below.



6. Install (No. 4) Z1023, rubber grommet into muffler bracket.



7. Install (No. 7) ALS-047, aluminum spacer in the backside of (No. 4) Z1023, rubber grommet and install (No. 5) ALS-046, aluminum spacer in the frontside as shown below.



8. Install (No. 3) *muffler*, onto (No. 2) 26461-144/744, tailpipe outlet. Align muffler bracket and muffler resonator bracket to subframe and secure using (No. 8,9) 6mm bolts as shown in the assembly diagram.

Note: It is recommended to trim the tab on the bottom right airbox cover near the header outlet as shown below.



9. Torque muffler mount bolts to factory specification.
10. Torque tailpipe chassis mount bolt to factory specification.
11. Install (No. 10) *RACE-SPS-1*, medium exhaust spring between muffler and tailpipe.
12. Install (No. 10) *RACE-SPS-1*, medium exhaust spring between header and tailpipe.
13. Before starting vehicle, check for proper clearance between new exhaust system and rear suspension (i.e. tire, swingarm, brakes, rear shock, and etc.) If any problem is found, please carefully follow through the installation steps again. If problem still persists, please call Yoshimura Tech Department at (800) 634-9166 / in CA (909) 628-4722.
14. It is recommended that the muffler and tailpipe be wiped down with rubbing alcohol to remove oil and fingerprints. This will help prevent tarnishing of the finish after the exhaust is heated up.

Note: After starting motorcycle, it is normal for new exhaust system and muffler to emit smoke until oil residue burns off.